

# Human Immunoglobulins



## Isotyping in research

In vaccine research, the isotype of the antibodies produced post-vaccination can give information on the type of immune response induced. For example, stronger induction of an IgA response might be desirable for a vaccine targeting viral pathogens, inducing mucosal immunity. While higher levels of IgG2 are correlated with a Th1 (pro-inflammatory) response, and higher IgG1 is more characteristic of a Th2 (anti-inflammatory) response.

Screening for antibodies developed against biologic drugs is a requirement of most clinical trials and post-approval monitoring. When a patient does develop an immune response it can be useful to determine both the specificity and antibody isotype of the response.

**Nordic-MUBio offers the highest quality range of products for the study and analysis of human immunoglobulins.**

Our highly validated product range spans mouse monoclonal antibodies against all isotypes of human immunoglobulins, including allotypes, and are available in multiple conjugates suitable for applications such as ELISA, flow cytometry, western blot and immunohistochemistry.

We also have a range of highly purified human immunoglobulins, suitable for use as references and antigens.

Determining the class (isotype) and subclass of an antibody is important for a variety of reasons, from selection of purification protocols to day-to-day immunological methods and clinical diagnostics.

Different antibody classes and subclasses serve a variety of different functions within the body and can be indicative of disease states and immunological processes. For example, IgE is characteristic of allergic reactions. Each antibody isotype has unique effector functions, capable of binding different cellular receptors.

Visit [nordicmubio.com/Products](https://nordicmubio.com/Products) now to find the answer to all your human immunoglobulin needs, or get in touch on [info@nordicmubio.com](mailto:info@nordicmubio.com)



Find **more** at [nordicmubio.com](https://nordicmubio.com)

# Human Immunoglobulin Products

## Purified Human Immunoglobulin

	Cat. Number
IgG	HuIgG
IgG subclasses standard Serum	NOR-01
IgG1 lambda G1m(f)	P 106
IgG4 kappa Gm4a	P 182
IgG1 lambda G1m (a)	P 210
IgG3 lambda G3m (g)	P 289
IgG4 kappa Gm4b	P 304
IgG2 lambda G2m n-)	P 315
IgG3 kappa G3m(b)	P 411
IgG2 lambda G2m (n+)	P 532
IgA subclasses standard Serum	NOR-04
Secretory IgA	P 020
IgA1 lambda (dimer)	P 444
IgA1 kappa, polymer	P 430
IgA2 lambda A2m (1-, 2+)	P 505
IgA2 (1+,2-) lambda	P 237
Human IgE kappa	P 050
Human Bence Jones kappa protein (Free light chain, kappa type)	P 016
Human Bence Jones lambda protein (Free light chain, lambda type)	P 017

Nordic-MUBio has developed an ever-expanding range of high quality immunological research tools, manufactured to strict ISO 9001 guidelines, to provide both reassurance and the best possible tools for your research.

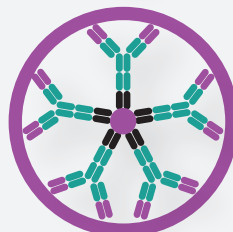
Visit [nordicmubio.com/Products](http://nordicmubio.com/Products) now to find the answer to all your human immunoglobulin needs, or contact us: [info@nordicmubio.com](mailto:info@nordicmubio.com)

Contact your local distributor here:

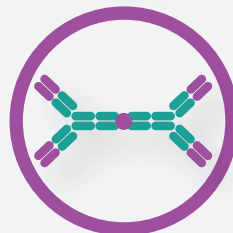


## Mouse anti-human

	Cat. Number	Available Conjugates*
IgG1	MAHu/IgG1	B,H,F,T
IgG2 (Fab subclass specific)	MAHu/IgG2	B,H,F,T
IgG2 (Fc subclass specific)	MAHu/IgG2Fc	B,H,F,T
IgG3 (F(ab'')2 subclass specific)	MAHu/IgG3	B,H,F,T
IgG3 (G3m(U) allotype specific)	MAHu/IgG3m(u)	B,H,F,T
IgG4 (pFc subclass specific)	MAHu/IgG4	B,H,F,T
IgG (class specific)	MAHu/IgGc	B,H,F,T



IgM (class specific)	MAHu/IgM	B,H,F,T
----------------------	----------	---------



IgA1	MAHu/IgA1	B,H,F,T
IgA2	MAHu/IgA2	B,H,F,T
IgA2 (m2 allotype)	MAHu/IgA2(m)2	B,H,F,T
IgA1 + IgA2	MAHu/IgAc	B,H,F,T



IgE	MAHu/IgE	B,H,F,T
-----	----------	---------



IgD	MAHu/IgD	B,H,F,T
-----	----------	---------

\*B= Biotin, H=Horseradish peroxidase, F = FITC, T=TRITC



Find **more** at [nordicmubio.com](http://nordicmubio.com)